

► POND MEETING..... 2



► FISH SALE ..... 4



► DELTA NITROGEN CREDIT..... 5

► DRAINAGE & WATER MEETING ..... 7

► COVER CROP COST-SHARE..... 9



○ JUNE

○ 2014

www.ccswcd.com  
217-352-3536 ext 3

Champaign County  
Soil & Water  
Conservation District

# SOIL & WATER *focus*

WORKING TO PROTECT AND ENHANCE OUR NATURAL RESOURCES  
BUILDING ON THE PAST - PRESERVING FOR THE FUTURE

## A 1590 NO-TILL DRILL IS COMING TO CHAMPAIGN COUNTY

The CCSWCD will have a 15' John Deere drill and will provide planting services. The drill is ordered, and hopefully it will arrive in time for planting cover crops this fall.

- At no cost to you, we will plant cover crop test strips in your field. We will plant them accordingly, to coincide with your equipment sizes.
- At no cost to you, we will plant cover crops in part or all of your field.
- Drill rental options for planting your wheat, soybeans, etc.



More details announced later this summer.

## ARE YOU MOVING AWAY FROM ALL FALL APPLIED FERTILIZER?

If you answered yes and if a sidedress bar is part of your plan, we may be able to help. The Champaign County SWCD working with American Farmland Trust (AFT) was recently able to provide financial assistance

to several producers in the county. More grant monies may be available in the near future. Please contact our office for more information.

### SWCD Board Members

Steve Stierwalt, Chairman  
Joe Rothermel, Vice-Chairman  
Eric Suits, Secretary-Treasurer  
Eleanor Blackmon, Director  
Lennie Heiser, Director  
Kenneth Kesler, Associate Director

### SWCD Staff:

Jonathon Manuel, R.C.  
Renee Weitekamp, A.C.  
Sharyl Walker-Ogle, GIS  
Randall Grussing, Field Consultant

### NRCS Staff:

Kevin Donoho, D.C.  
Richard Parks, S.C.T.  
Mitch Hess, S.C.

2110 W Park Court, Suite C, Champaign, IL 61821

**FREE  
POND  
CLINIC**

Join Us at the Urbana Sportsmen's Club  
(705 W Hickory Street, Mahomet, IL) for...

# Healthy Ponds & Happy Fishermen

**July 22, 2014 from 6–8pm**

**Rain or Shine**

**Lawn Chairs  
are Encouraged.**



For More Information:

Champaign County SWCD  
2110 W Park Court, Ste C  
Champaign, IL 61821

Phone: 217-352-3536 ext 3  
Website: [www.ccsxcd.com](http://www.ccsxcd.com)

## **Boating Laws and Fishing Regulations**

Trent Revees, Conservation Police Officer

## **Pond Shocking Demonstration & Stocking Discussion**

Mike Garthaus, IDNR

## **Aeration Systems & Pond Health**

Casey Reed, VP Fountains and Aeration for  
Aquatic Control



**Come Early and Join Us as the Urbana Sportmen's Club fires up the grill. Hamburger or Brat, Chips and a drink for \$6. RSVP is appreciated.**

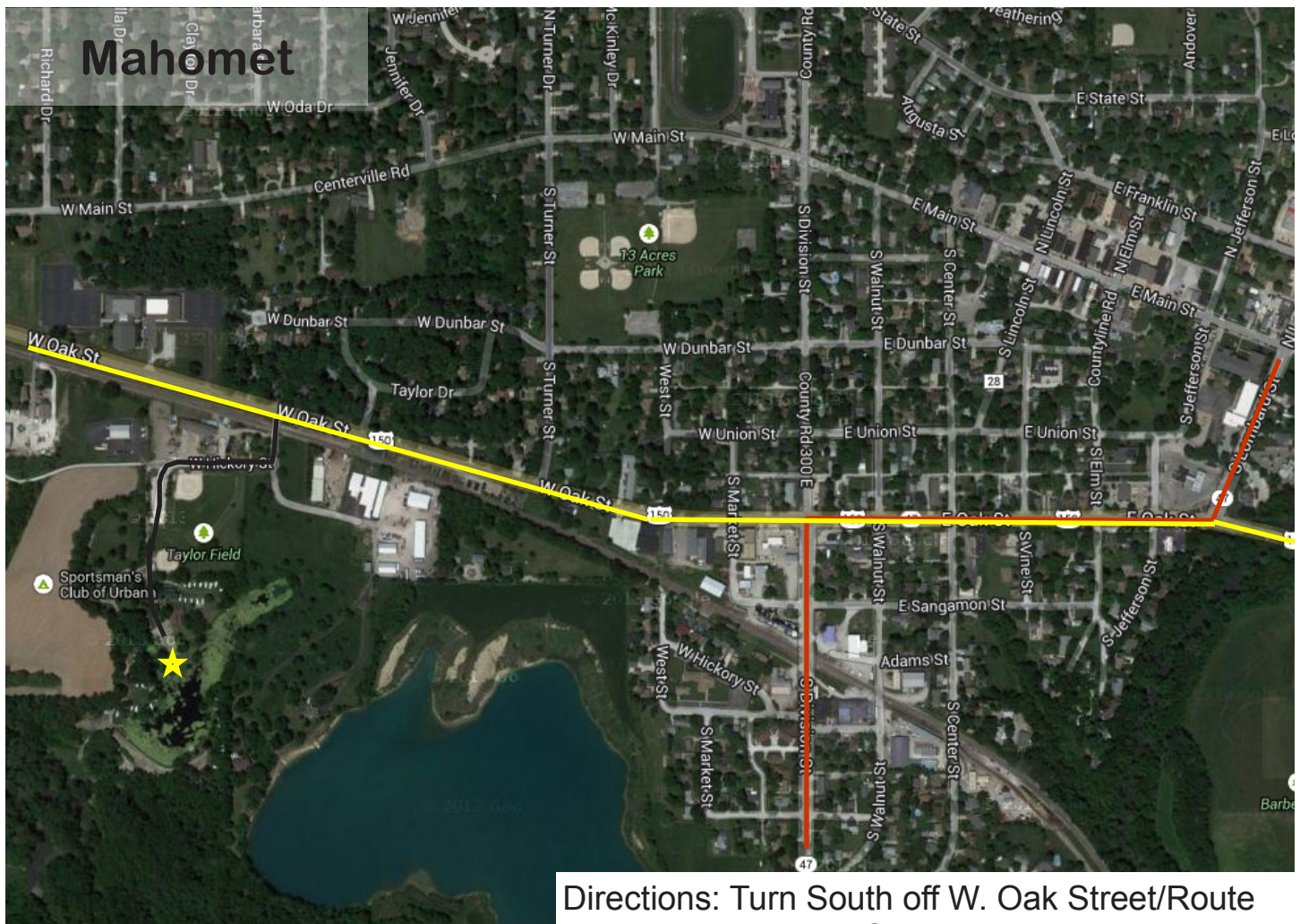
---

## **Pond Information Binders:**

- Do you have a book from our last meeting? Please bring it and update your pages free of charge.
- Need a book—please call 217-352-3536 ext 3 to pre-order by July 17th. Cost is \$5.



# HEALTHY PONDS & HAPPY FISHERMEN Continued



Directions: Turn South off W. Oak Street/Route 150 onto W Hickory Street. Follow the road around the ball diamonds to the Sportmen's Club

— Route 47 through Mahomet  
— Route 150 through Mahomet

## FISH DESCRIPTIONS

**Channel Catfish:** They are excellent for food and sport fishing. They are compatible with all pond species and can grow 1 lb. per year if fed with commercial feed.

**Black Crappie:** Excellent for food and sport fishing; however, they can quickly overpopulate and are not recommended for small ponds.

**Straight Bluegill:** An excellent sport fish that grows a little slower than sunfish.

**Fathead Minnows:** These are especially important when stocking new ponds. They are also good for ponds prior to stocking largemouth bass. Young bass use them for food.

**Largemouth Bass:** One of the most sought after game fish. The average size is 20 inches and they may live up to 23 years.

**Red Ear Sunfish:** Excellent in deeper ponds and with Bluegill and Hybrid Sunfish.

**Hybrid Sunfish:** They come from crossing a male bluegill with a female Green Sunfish. They produce 90% males so they do not over populate a pond. They are a good choice for small ponds and will grow ¼ to ½ lb. per year. They can reproduce with bluegills if they are present in the pond.

**Hybrid Redear:** Cross between a male bluegill and a female redear. It does eat snails and clams and has a slightly higher reproductive rate than the Hybrid Sunfish.

**Triploid Grass Carp:** They eat many weeds, but not algae, and do not reproduce.



# Champaign County SWCD Fall 2014 Fish Sale



Last day to order Fish: **Monday, September 22nd**  
Grass Carp must be ordered by Friday, September 12th

Name: \_\_\_\_\_ Phone: \_\_\_\_\_

Address: \_\_\_\_\_ City: \_\_\_\_\_ Zip: \_\_\_\_\_

## Additional Information for Grass Carp Orders Only: (GRASS CARP MUST BE ORDERED BY SEPTEMBER 12TH)

Pond Acreage: \_\_\_\_\_ Township: \_\_\_\_\_ Section: \_\_\_\_\_

### To Place an Order:

Complete order form and mail along with your check:

Please make checks payable to: Champaign County SWCD  
Or pay by credit card from our web site: [www.ccsxcd.com](http://www.ccsxcd.com)

Champaign County SWCD  
2110 W. Park Ct, Suite C  
Champaign, IL 61821  
217-352-3536 ext 3

Fish Type	Size	Bag or Pound Quantity	Price	Quantity Ordered	Price
Channel Catfish	4-6"		\$ 0.65 each		
Channel Catfish	6-8"		\$ 0.80 each		
Channel Catfish	8-10"		\$ 0.95 each		
Albino Catfish	6-8"		\$ 1.05 each		
Black Crappie	2-3"	100 per bag	\$ 50.00 per bag		
Fathead Minnows		100-150 fish per lb	\$ 10.00 per lb		
Hybrid Redear	2-4"		\$ 0.50 each		
Hybrid Sunfish	1-2"	250 per bag	\$ 60.00 per bag		
Hybrid Sunfish	3-5"		\$ 0.75 each		
Hybrid Sunfish	5-7"		\$ 1.05 each		
Largemouth Bass	2-3"		\$0.80 each		
Largemouth Bass	5-8"		\$ 1.85 each		
Red Ear Sunfish	1-2"	250 per bag	\$ 60.00 per bag		
Bluegill	1-2"	250 per bag	\$ 60.00 per bag		
Bluegill	3-5"		\$ 0.75 each		
Triploid Grass Carp	8-11"		\$ 10.00 each		
Pond Delivery available on orders over 1,000 fish			\$ 100.00	Yes____ No____	

If you are interested in ordering walleye, please call.

**Total Cost**

Office Use Only

Date: \_\_\_\_\_

Amt pd: \_\_\_\_\_

Payment: \_\_\_\_\_

Fish Pick-up will be:  
Friday, October 3, 1-2:30 p.m.





# NITROGEN CREDIT PROGRAM

Delta's Nitrogen Credit Program (NCP) is an opportunity for farmers to generate additional revenue by adopting a "4R" nutrient stewardship strategy that reduces total nitrogen (N) fertilizer applied to their corn crops. Field trials have shown that the rate of N fertilizer is the best predictor of nitrous oxide (N<sub>2</sub>O) emissions in row crop agriculture in the U.S. Midwest. By demonstrating increases in N use efficiency from rate adjustments, farmers can reduce their N<sub>2</sub>O emissions and generate N credits on a voluntary basis.



*North Central Region*

## *How does the NCP work?*

First, farmers provide data about their fertilizer management practices. Next, we calculate your N credits based on this data. Then, a non-governmental third-party verifies the calculations, and credits are awarded. The Program bundles and sells the credits, and returns revenue to participating farmers.

## *How do I know if I'm eligible?*

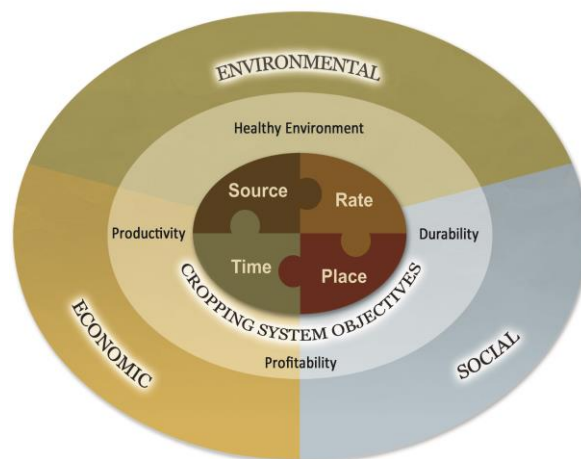
To be eligible you must be a corn farmer in the North Central Region (as shown on map) who has reduced, or is willing to reduce N fertilizer applications to the corn component of your crops.

## *How much does it pay and how much will it cost me?*

Individual revenues will be based on the number of N credits you generate by shifting N fertilizer application rates, less costs of verification and sale. The only cost to you is the time it takes to provide the data.

## *What data or documentation do I need to provide?*

- **Application dates, rates, and N content for each product applied**, for each field you enroll. If you have access to those same data points for the same field(s) for recent years, providing that information may help you generate more N credits. Your retailer or service provider may be able to provide recent historical data directly to the Program with your consent.
- **Field coordinates**;
- **Ownership and lease agreements** (you must document control of your land in order to establish custody of any credits generated);
- **Fertilizer application records** (receipts, load sheets, or other documentation from your retailer or service provider).
- **Adherence to voluntary state, university, or industry 4R guidelines**, depending on your state and cropping system.



Graphic Source: <http://www.ipni.net/article/IPNI-3323>

## *What do I do next?*

The first step is to fill out an Initial Screening Form for one field to help you determine your N credit potential. After receiving the completed form, we will calculate your potential and follow up with you via your preferred method of contact. If you decide you would like to proceed beyond the screening phase, your participation will be formalized by signing an agreement with NCP. You will then need to provide the data and documentation listed above via email or the NCP website. All personal identification and farm operation information will be kept confidential.



Champaign County Farm Bureau &  
Champaign County Soil & Water  
Conservation District



## Drainage & Water Related Issues Update & Discussion

**June 26<sup>th</sup> starting at 8:00 a.m. at the Champaign County  
Farm Bureau.**

The meeting is open to all drainage district commissioners and individuals who have an interest in water related topics. Featured topics:

- What's pending; What's on the horizon as it pertains to water related legislation and policies on the national, state and local level that will directly impact your farm..
- The Gulf Hypoxia; We've all heard about it but what are the latest efforts to impact its size and how does it relate to agriculture; This session you won't want to miss!
- The Nutrient Research & Education Council, NREC; What is this group and why are they assessing a tax on each ton of fertilizer we purchase; What are they doing with all the money they are collecting?
- Urban/residential parcels in a drainage district, now what? How should they be handled and what about those non-ag drainage issues; Can we ignore them? We'll hear from two different perspectives a drainage district commissioner who has worked with a municipality on a large drainage project and a city representative who worked with a district to detach within city limits in an effort to get things moving on several drainage issues

The event is free and no RSVP is required.

Champaign County Farm  
Bureau

801 N. Country Fair Dr. Ste. A  
Champaign, IL 61821  
217-352-5235

# Cover Crop Application Cost Share



www.ccsxcd.com

## **Winter Kill Cover:**

Oilseed Radish  
Oats (Spring)

## **Spring Termination:**

Annual Ryegrass  
Cereal Rye  
Crimson Clover  
Field Winter Pea

Reimbursement is  
\$15/acre.

Call Our Office Today  
to Learn More.

Dear Producer:

The Champaign County Soil and Water Conservation District (SWCD) has partnered with American Farmland Trust (AFT) to secure funding for the planting of Cover Crops. The funding will cover application costs for most fields.

The funding is designed to help operators and land owners in Champaign County gain experience using cover crops in their operations.

Sign-up is simple and minimal information is needed:

1. Return the application to notify us where the fields are located.
2. Purchase your seed and provide copies of your bills by September 1, 2014.
3. Champaign County SWCD will promptly process the bills.



Detach and return

List field location and number of acres below.

T.\_\_\_\_\_, R.\_\_\_\_\_, Section\_\_\_\_\_ # of Acres\_\_\_\_\_

T.\_\_\_\_\_, R.\_\_\_\_\_, Section\_\_\_\_\_ # of Acres\_\_\_\_\_

T.\_\_\_\_\_, R.\_\_\_\_\_, Section\_\_\_\_\_ # of Acres\_\_\_\_\_

\_\_\_\_\_  
Name

\_\_\_\_\_  
Address

\_\_\_\_\_  
Phone

## COVER CROP CHAMPION

The National Wildlife Federation has named the Champaign County SWCD a Cover Crop Champion. This means we can provide farmers with the materials and resources needed to empower them to speak to others about Cover Crops. If you are interested in learning more about cover crops, this network of farmers can be very informative. You won't have to travel and attend a large meeting, but can learn from experiences in your own backyard.



We need your help to build a premier outdoor classroom and observatory at the St. Joseph Wetland Restoration and Education Site.

[illegible]

- Walking & Seating Areas Overlooking Wetland Flora & Fauna.
- Kiosks and Signage.
- Exploration and Research Area for Students.
- Drivable Pavers Parking Area to Accommodate Buses.
- Butterfly & Rain Gardens.
- The IDOT approved entrance of Route 150 is complete.



- ◆ Remember a Loved One
- ◆ Honor a Member of Your Family
- ◆ Display Your Business' Name
- ◆ Thoughtful Gift Idea



## Granite Brick Pavers

4"x8" with 2 lines of lettering - \$100  
8"x16" with 3 lines of lettering - \$500  
12"x16" with 4 lines of lettering - \$1000  
12"x16" with 4 lines of lettering & logo- \$1500

Put Your Information on an Interpretive Sign - \$5000  
Naming rights are also available for the kiosk and benches - over \$5000

**Your donation to this 501a organization is tax deductible and you will receive permanent recognition.**

**Name:** \_\_\_\_\_

**Phone:** \_\_\_\_\_

**Address:**

City, State &amp; Zip

## Granite Paver

□ 4"x8" - \$100

□8"x16"- \$500

□12"x16" - \$1000

□12"x16" w/ logo- \$1500

□ Interpretive Sign

- Naming Rights



Champaign County SWCD  
2110 W Park Court, Ste C  
Champaign, IL 61821



LOOK INSIDE FOR:

**POND MEETING**

**FISH SALES**

**DRAINAGE & WATER MTG**

**DELTA INSTITUTE NITROGEN  
CREDITS PROGRAM**

**COVER CROP COST-SHARE OPPORTUNITY  
ST JOSEPH WETLAND EDUCATION CENTER**



## EDUCATION



In April, 28 teams from six counties came together to complete in the Envirothon. The Envirothon is a competition for high school teams to test their knowledge in the 5 science and environmental areas of: Aquatics, Forestry, Wildlife, Soils, and Sustainable Ag.

Paris #1 from Edgar County won the event with 452 points out of 500 and advanced to the state competition.

Mahomet-Seymour #2 from Champaign County advanced to state as the winning FFA team and represented our county well!